



Request for Quote (RFQ)

NWFX – Alburgh Fire Department POP Build-Out

Location: 30 Fire House Road, Alburgh, VT

Issued By: Northwest Fiberworx (NWFX)

Bid Submission Deadline: 04/25/2026

Submission Form: Digital Format to the Project Contact

Project Summary

Northwest Fiberworx (NWFX) is seeking a qualified General Contractor to manage and execute a light commercial build-out within the Alburgh Fire Department / Town Hall facility in Alburgh, Vermont.

The contractor will be responsible for project coordination and completion of construction, electrical service, HVAC installation, generator installation, permitting, and inspections. All work must comply with NEC, NESC, Vermont state codes, and local building regulations.

Respondents must provide pricing, schedule, and lead times.

Project Contact

All questions, site visit requests, and proposal submissions shall be directed to:

Joshua Bohar

Northwest Fiberworx

Phone: 207 298 4940

Email: Joshua.bohar@macmtn.com



Scope of Work (Summary)

1. Interior Construction

- Construct or reinforce ~11' partition wall (7'-11" to 9'-6" height slope).
- Insulate, install 5/8" drywall (both sides), tape, finish.
- Install (1) 30" x 68" steel door with keypad lockset.
- Trim, prime, and paint.

2. Electrical

- Install new panel supporting:
 - (4) 30A 240V circuits
 - (2) 15A 120V circuits
- Install grounding (2 AWG minimum) per NEC.
- Install:
 - (4) L6-30R receptacles
 - (2) double-gang 120V receptacles
 - (4) 4' LED fixtures and wall switch

Electrical Service – Base Bid (Overhead)

- Coordinate with Vermont Electric Cooperative.
- Install mast/weather head per NESC.
- Must be high enough to maintain 18' clearance across the parking lot.



Telecom Mast

- Install second mast (40" separation minimum from electrical mast).
- Must be high enough to maintain 18' span clearance.

Alternate Bid – Underground Service

Provide pricing for trench service:

- 36" trench depth.
- 4" Schedule 30 conduit (power at bottom).
- 4" Schedule 30 conduit (telecom at 24" depth).
- Surface restoration included.

3. HVAC

- Install (1) 9,000 BTU 1:1 mini-split system
- Interior and exterior unit installation
- All refrigerant, drain, and electrical connections per manufacturer and code

4. Emergency Generator

- Install (1) 22kW commercial diesel generator
- Provide pad if required
- Electrical tie-in to main panel



- Grounding and bonding per NEC
- Install (2) protective bollards
- Evaluate need for snow protection cover

5. Permitting & Inspections

- Obtain all required temporary local and state permits
- Coordinate inspections
- Deliver project fully compliant and approved
- Long term permits identified by the contractor will be assisted by NWFx in acquiring

Proposal Requirements

Include:

- Itemized pricing
- Alternate underground service pricing
- Estimated schedule (start + duration)
- Assumptions/exclusions
- Proof of insurance and applicable licensing



Bid Evaluation

Bidders shall be evaluated based on responses to this RFP with scoring weighted as follows:

- Pricing (50%)
- Project Time Frame (25%)
- Demonstrated Prior Experience, Quality, and Capacity (25%)

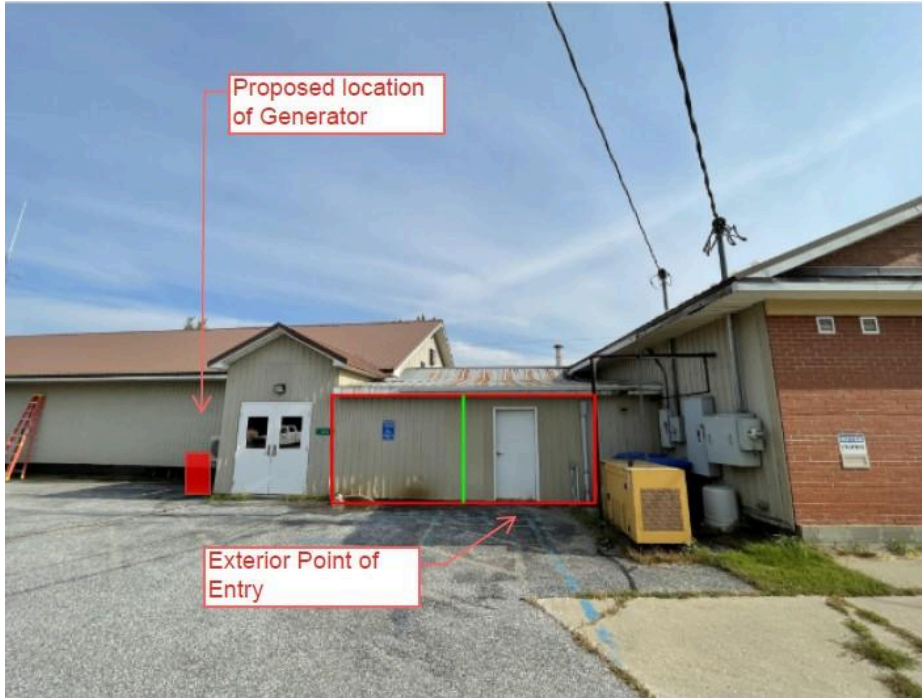
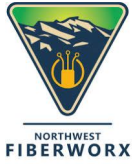
Site Visit

Site visits available prior to final quote submission for more detailed location and placement of utilities and subsystems.

Below are photos with High Level Designs for approximation of locations.

Exterior Space





Exterior generator space. Pathing to interior space TBD

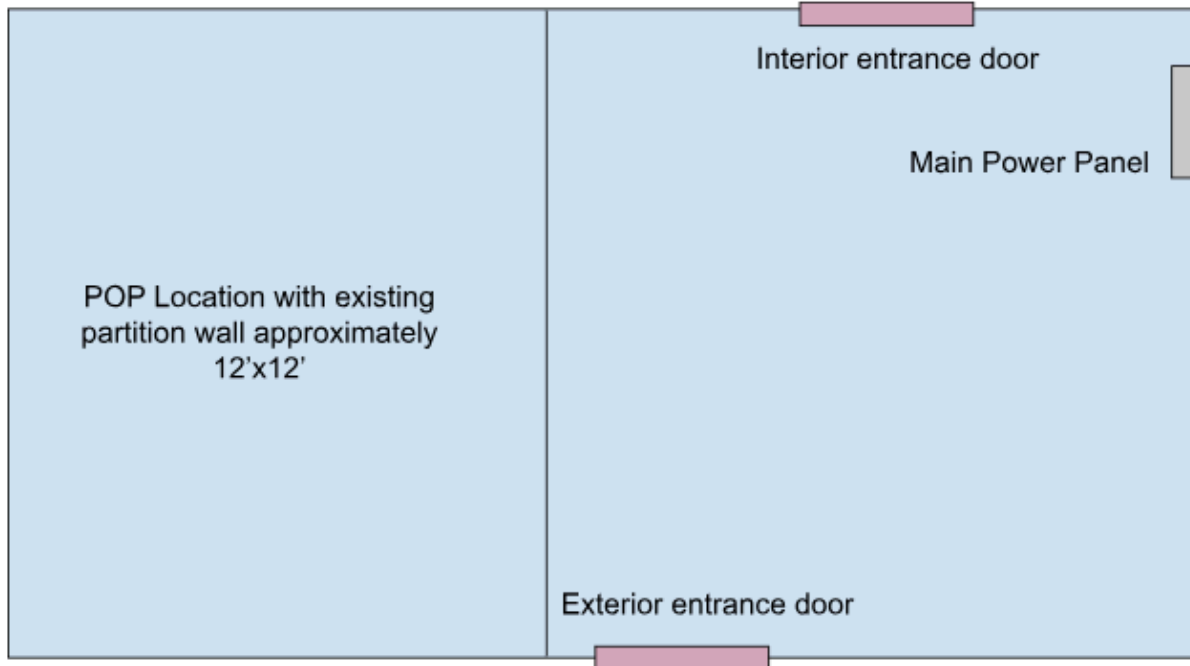


There will be two mast, one for Utility and one for Telecom use



NORTHWEST
FIBERWORX

Interior Space



Rough plan of the interior space



NORTHWEST
FIBERWORX





NORTHWEST
FIBERWORX

